

HIGH PRESSURE WATER BLASTERS



CEX40



Stainless steel pump-head.
Integrated unloader valve.



EEx electrical box with main
switch, star delta starter &
overload relay.



Cut-off switch for low inlet
water



Earth Cable with Clamp.



Integrated booster pump & filter
systems w. low pressure shut
down.



CEX40 Series

- ATEX compliant EEx equipped Units for Zone II use.

Model (60Hz):	CEX40-400	CEX40-500	CEX40-800	CEX40-1050	CEX40-1380	CEX40-1800
W.P. (Bar/PSI):	400 / 5800	500 / 7260	800 / 11600	1050 / 15225	1380 / 20000	1800 / 26100
Flow (LPM/GPM):	43.5 / 11.5	35 / 9.2	22 / 5.8	16 / 4	13.8 / 3.6	10 / 2.6
Model (50Hz):	CE40-400	CE40-550	CE40-800	CE40-1250	CE40-1380	CE40-2000
W.P. (Bar/PSI):	400 / 5800	550 / 7975	800 / 11600	1250 / 18125	1380 / 20000	2000 / 29000
Flow (LPM/GPM):	37 / 9.7	30 / 7.9	18 / 4.7	13 / 3.4	12 / 3.2	9.2 / 2.4
Electrical Spec.:						
Motor (Hp/Kw):	60Hz: 45 / 33 50Hz: 40 / 30					
Voltage (60/50Hz):	440 / 400					
Amperage (A):	57 / 57					
Dimensions (L x W x H): 1600 x 1050 x 1150mm, Weight: 890Kgs						

All models are CE marked & ATEX Approved.

Standard accessories incl. with each machine:

- 30m 4 core oil resistant electrical cable.
- 20m 1250bar high pressure hose
c/w 1/2" stainless steel female swivel.
- Trigger operated dump gun
c/w 90cm stainless steel lance.
- Sapphire straight jet spraying nozzle.
- Service Video.

Optional accessories for each model:

- 20m 1250bar high pressure hose
c/w 1/2" stainless steel female swivel. (Extension hose).
- Rotating nozzle.
- Short lance.
- Safety gear.
- Spare part kit.

www.denjet.com





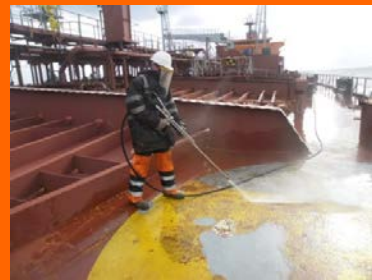
Single jet Rotating Nozzle



Ultra Impact Rotating Nozzle



Surface - Ultra Impact Nozzle



Surface Blasting

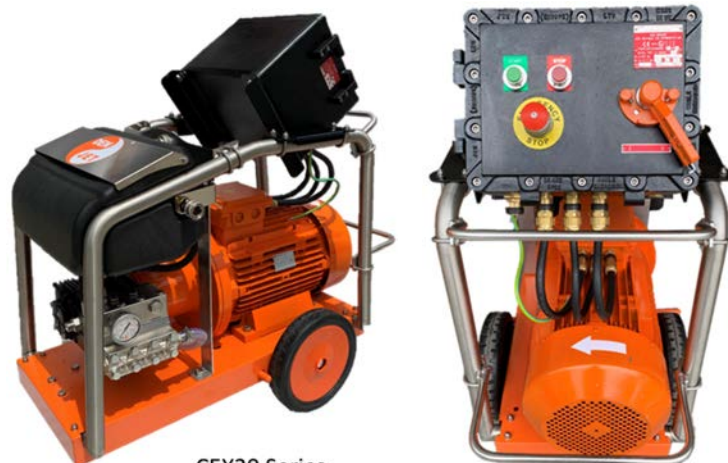


CA12-250 Air Powered Blaster
Atex compliant Atex II cat.2G&D T5

SAFETY GEAR (PPE)

	<p>Safety helmet c/w net visor and ear muff. Safety glasses are recommended to wear as well. Helmet: EN397. Net Visor: EN 1731:2006. Ear muff: EN 352-3:2002</p> <p>Part Number: 81600601</p>
	<p>Waterproof glove with protection for up to 500 bar pressure. The glove has a rough, sand patterned surface and the material itself provides lots of friction, all for the best grip on the tools. Supplied with separate inner glove in nylon for good comfort. Part Number: 81600669</p>
	<p>Water jetting boot for up to 1200 bar (17400 psi) will protect the foot and the lower part of leg against water jet penetration. (Safety boots for up to 3000 bar (43500 psi) is available upon request)</p> <p>Available in size 43-45.</p>
	<p>Safety Apron - the full area of the Apron has built-in protection. Ideal to wear in warm environments. The position of the Apron can be changed with the adjustable neckband. The Apron comes in one size. Weight 1.4 kg / 3.0 lbs.</p> <p>Max pressure 1250 bar (18125 psi):Part Number : 81600648 Max pressure 3000 bar (43500 psi):Part Number: 81600637</p>
	<p>Safety jacket and trousers with built-in protection in most areas. Jacket has integrated hand protection and the high trousers has adjustable shoulder support.</p> <p>Jacket 2.4kg - Trousers 2.4kg</p> <p>Two pressure ratings available up to 3000 bar (43500 psi) protection.</p> <p>Available in size small/Medium and large/X-large.</p>
	<p>Waterproof overall protect the operator only from spray, cold and flying debris. It does NOT deflect from direct jet impact. 190g PU/polyester - EN343 waterproof</p> <p>Size L - Part Number : 81600632 Size XL - Part Number : 81600609</p>
	<p>Hose protection. The gun is held near vital parts of the body the hose protection prevents injuries due to hose failure. Protects up to 3000 bar (43500psi). The adjustable strap holds the hose protection securely in place.</p> <p>Length 750mm - weight 1.25kg. - P/N: 81600626 Length 1400mm - weight 2.30kg. - P/N: 81600617</p>
<p>Other safety gear available upon request.</p>	

TST1310725



CEX20 Series

- ATEX compliant EEx equipped Units for Zone II use.

DEN-JET Marine Pte Ltd. 67A Joo Koon Circle, Singapore 629081.
Tel: +65 6268 1238 - Fax: +65 6268 2270 Email: denjetmarine@denjet.com
www.denjet.com

